



The Martin Family Language Involvement Program & The Port Salerno Talks Early Language Initiative



Mission

The mission of the Martin Family Language Involvement Program and Port Salerno Talks, in partnership with our community, is to empower families to build the foundation of their child's language, enabling future success in both academic and lifelong pursuits.



Vision

Creating a cohesive community in Martin County, Florida in which parents and families are empowered to realize their potential as their child's first teacher.



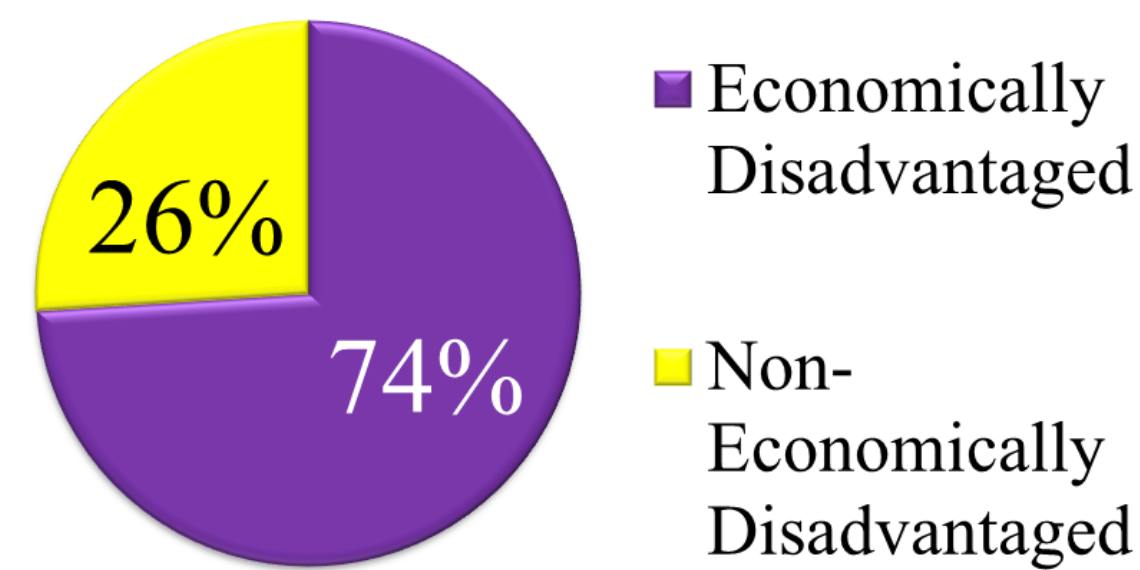
Web Address:
Cristina Smith:

http://pse.martinschools.org/pages/Port_Salerno_Elementary_School/Port_Salerno_Talks
772-219-1610 ext. 142 smithc1@martin.k12.fl.us

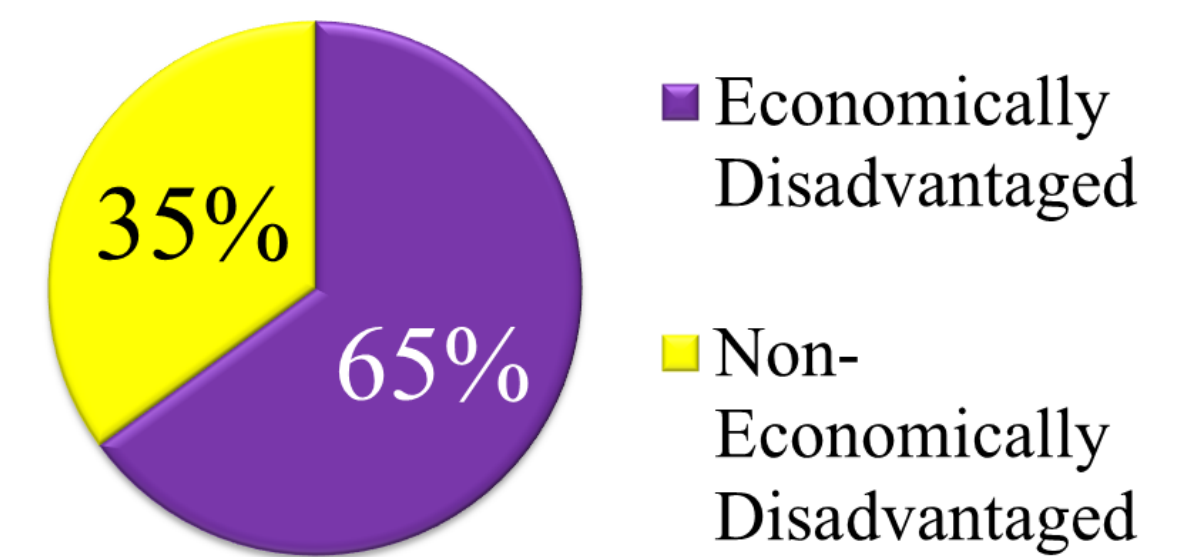
Background

Port Salerno (PSE) & JD Parker (JDP) Elementary Schools

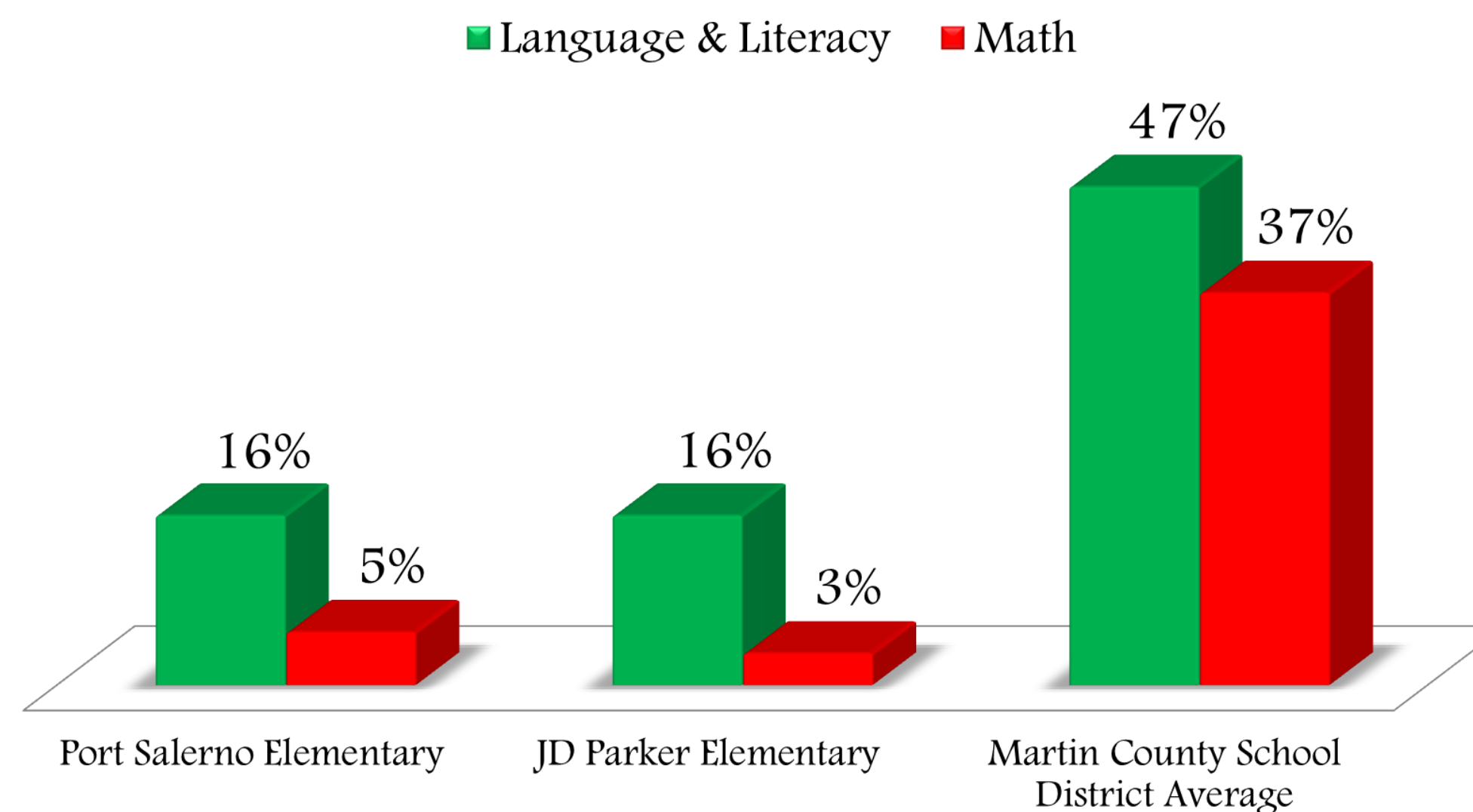
Economic Background of PSE Students



Economic Background of JDP Students

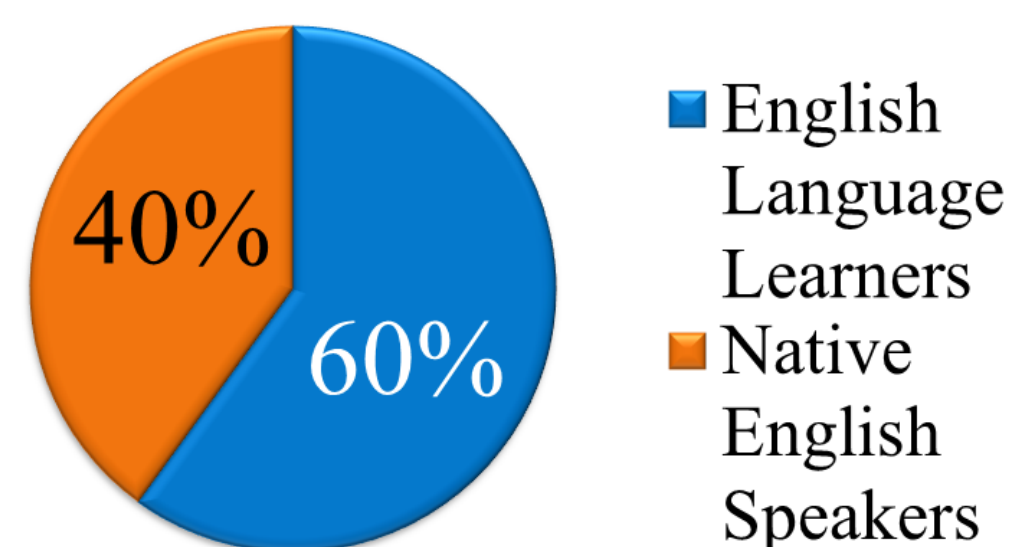


Florida Kindergarten Readiness Screener Proficiency

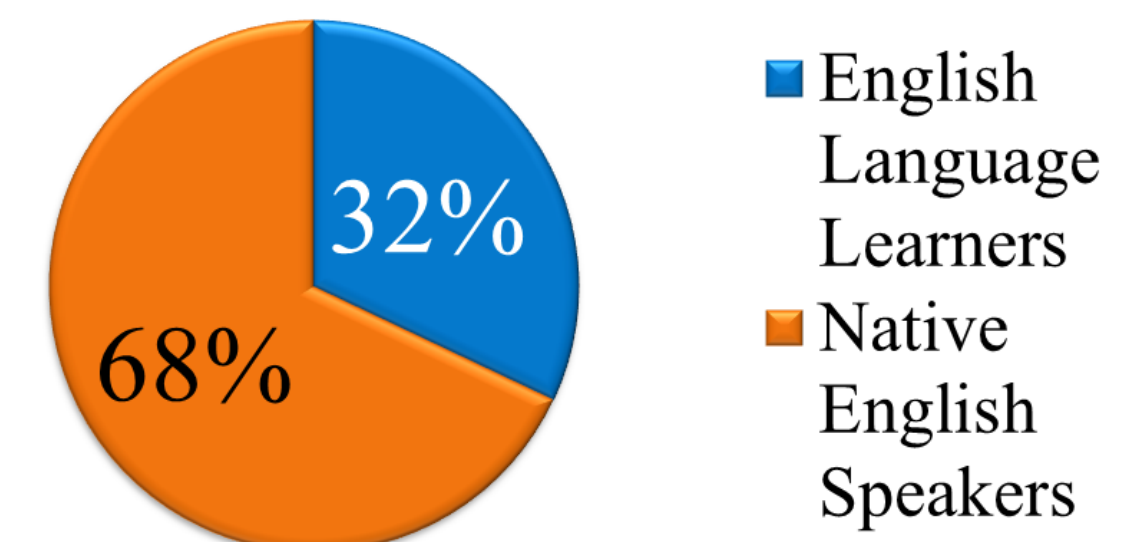


Florida Kindergarten Readiness Screener (FLKRS)
District Report of School Results, Fall 2014

Language Background of PSE Students



Language Background of JDP Students



Our Families

Home languages include Spanish, K'iche', Mam, and Papti.



Our Purpose

Port Salerno Talks and the Martin Family Language Involvement Program work in partnership with families to prevent the achievement gap from forming. Families receive early interventions designed to teach parents the power of speaking to their children from birth and to increase early language engagement in their home language.

The goal of the intervention is two-fold: to educate families regarding the critical nature of early language acquisition and to give families the tools and strategies necessary to craft meaningful and supporting interactions with their children.

Program Model

2014-2015

- Small group coaching sessions with 3-4 families per group
- Meet once a month for 7 months
- 18 families, 58 children

2015-2016

- Hybrid small group and 1-on-1 in-home coaching sessions
- Meet twice a month for 7 months
- Projected 40 families, 130 children

Intervention Focus

Increase in the **quality** and **quantity** of the home language environment through the use of:

- ❖ Planned behavior and goal setting
- ❖ “Cues to action” with LENA data
- ❖ Self-efficacy and empowerment through the learning of strategies

Suskind, Dana, et al. "An Exploratory Study of "Quantitative Linguistic Feedback": Effect of LENA Feedback on Adult Language Production." *Communication Disorders Quarterly* (2013).

Impact

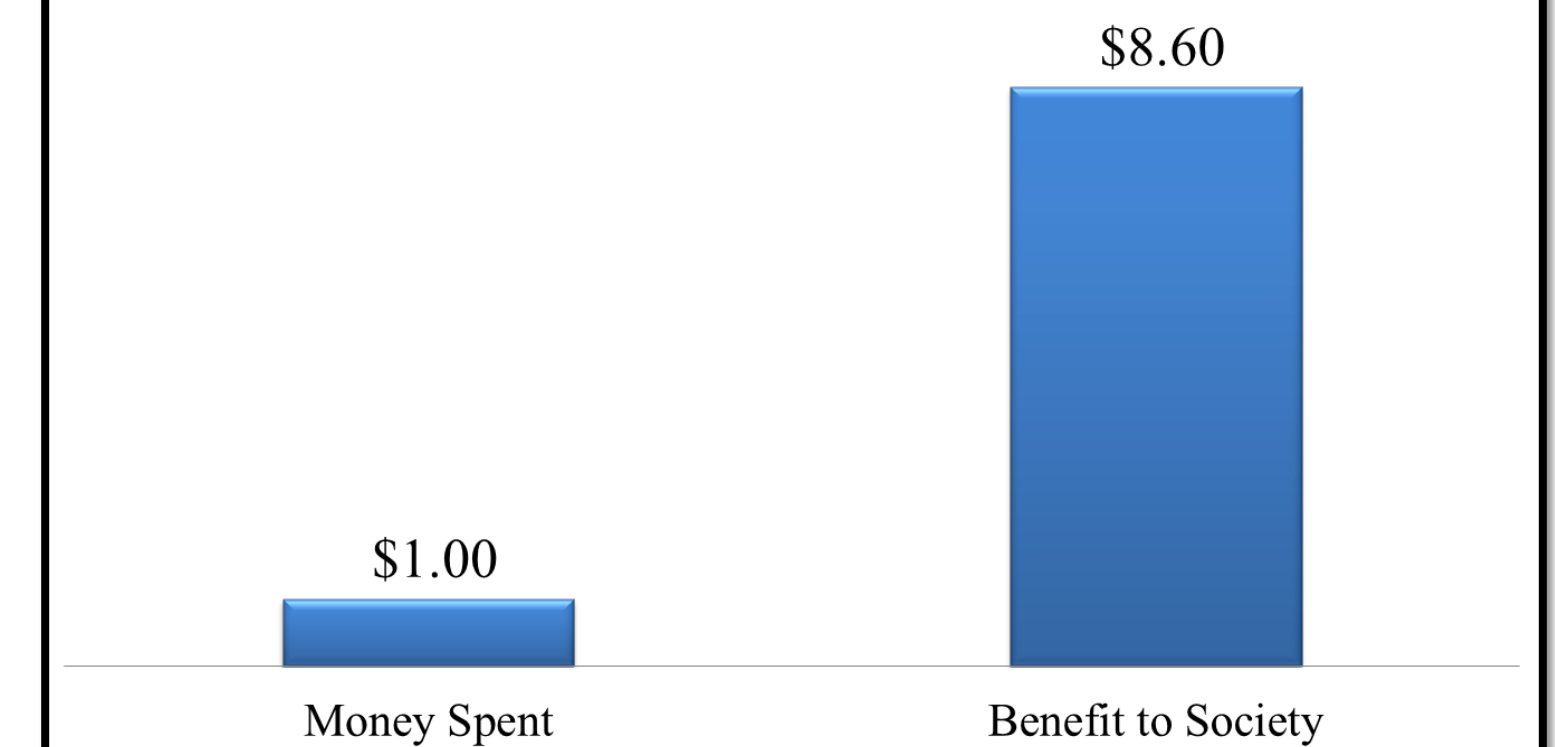
What families are saying:

- ❖ “He’s learning a lot! He repeats everything I say.”
- ❖ “Now I spend more time teaching him and reading.”
- ❖ “While I cook she asks me questions of what I am cooking and wants to help me cook!”
- ❖ “Now he pays more attention when we play and waits until I finish reading the whole book!”
- ❖ “Now I spend more time talking to my kids.”
- ❖ “I’ve noticed how important it is to talk to him. Now he talks more.”
- ❖ “He likes it when his siblings read to him. He sits still until they finish reading the book, before he would walk away.”
- ❖ “I’ve loved the explanations of my coach. Now I know how to talk to my baby.”
- ❖ “Now I spend more time with my daughter and play.”
- ❖ “I am more motivated to read to my kids.”



Why Invest Early?

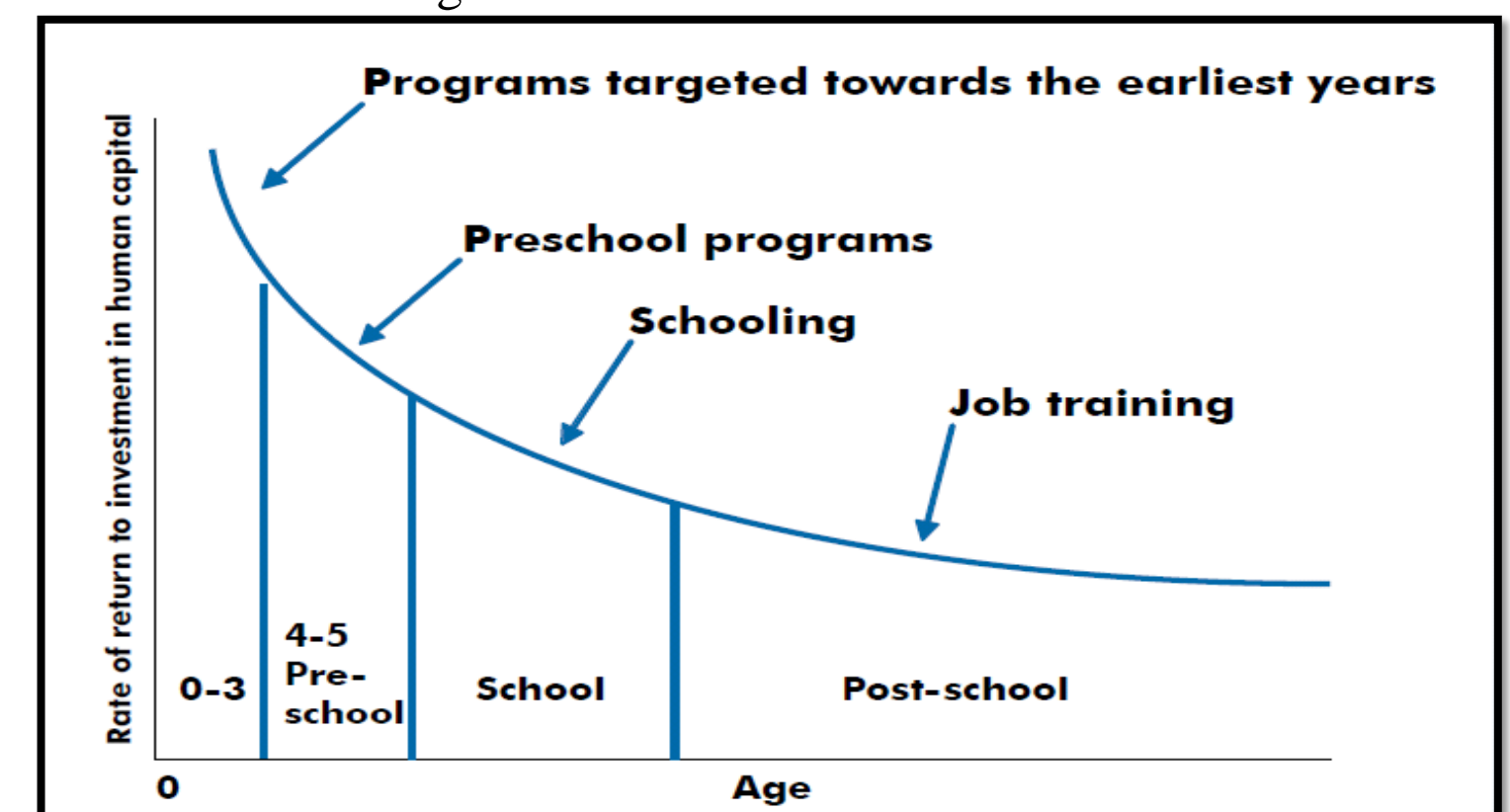
Early Learning Return on Investment



United States of America. Executive Office of the President of the United States. The Economics of Early Childhood Investments. 2014.

Returns to a Unit Dollar Invested

(a) Return to a unit dollar invested at different ages from the perspective of the beginning of life, assuming one dollar initially invested at each age



Heckman, James J. "The Case for Investing in Disadvantaged Young Children." Big Ideas for Children: Investing in Our Nation's Future (2008): 49-58.

Recognitions & Our National Community



WHITE HOUSE INITIATIVE
on EDUCATIONAL EXCELLENCE for HISPANICS
25 Years of Fulfilling America's Future



Little Red Schoolhouse Award



Results

Program Evaluation Questions

- ❖ What influence will different intervention elements have on parent behavior?
- ❖ What influence will the interventions have on child outcomes in terms of language acquisition & academic achievement?
- ❖ How will parents react to the intervention? How willing will parents be to participate?

Program Goals

Family Retention

- 100% of families will graduate from the program

LENA Data

- 100% of families will experience an increase in conversational turns, adult words, and/or child vocalizations

MacArthur-Bates CDI

- 100% of children will see an increase in communicative development

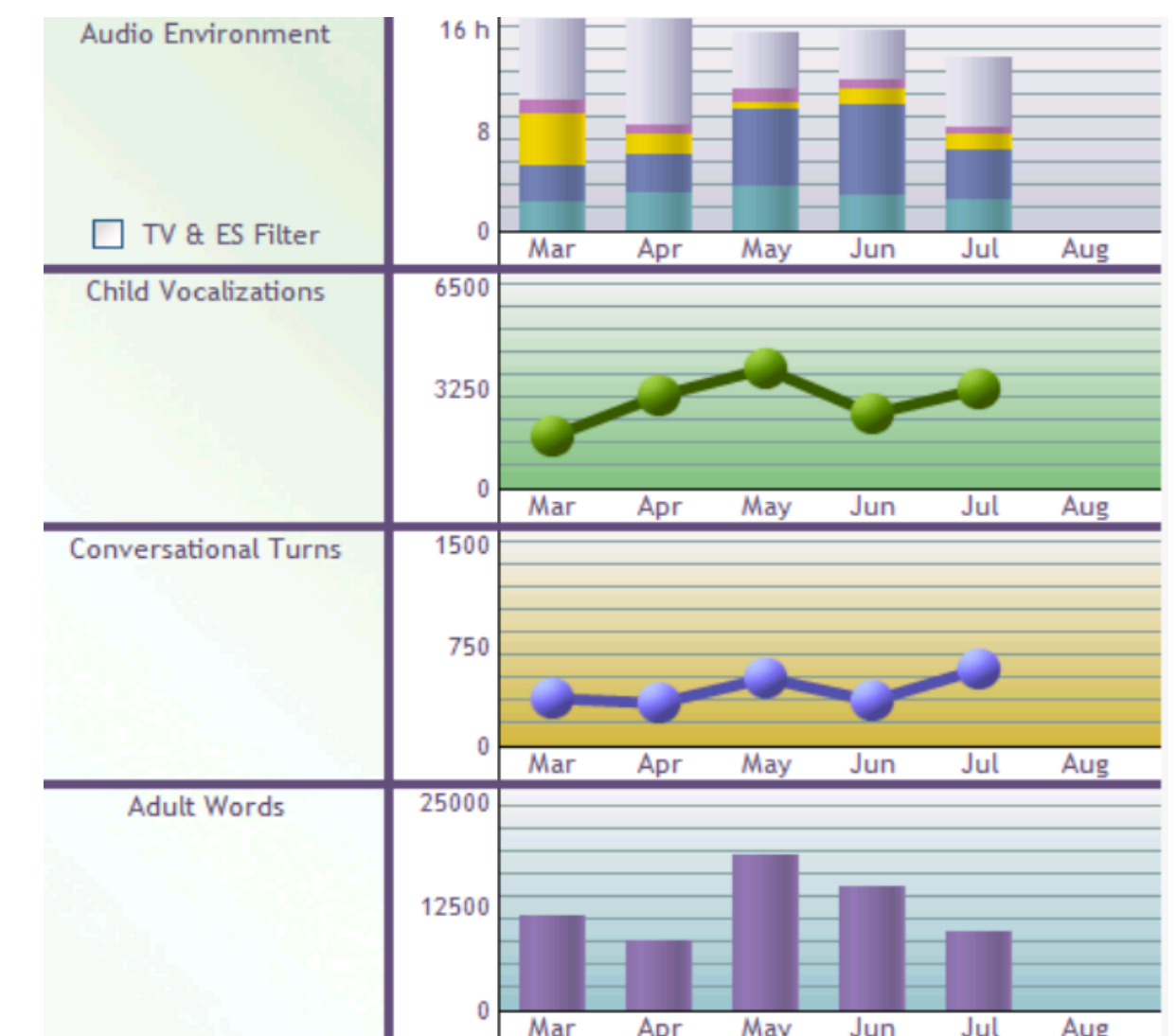
FLKRS

- Increase in proficiency in language and literacy skills on the Florida Kindergarten Readiness Screener

Vocabulary

- Increase in students scoring on grade level on iReady vocabulary assessment

LENA Data



Family Retention

100% graduation rate!